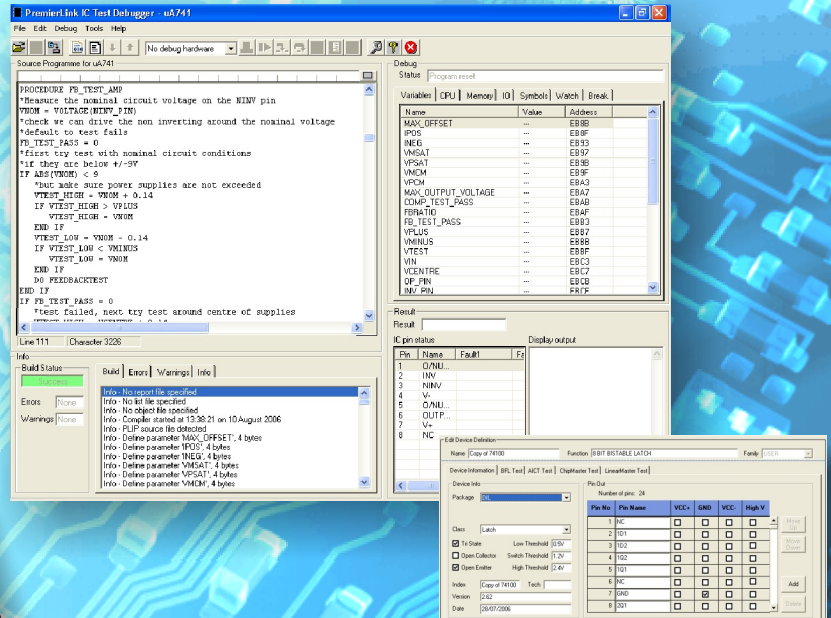


CompactLink

Functional IC Test Generating Software for Compact Professional Range



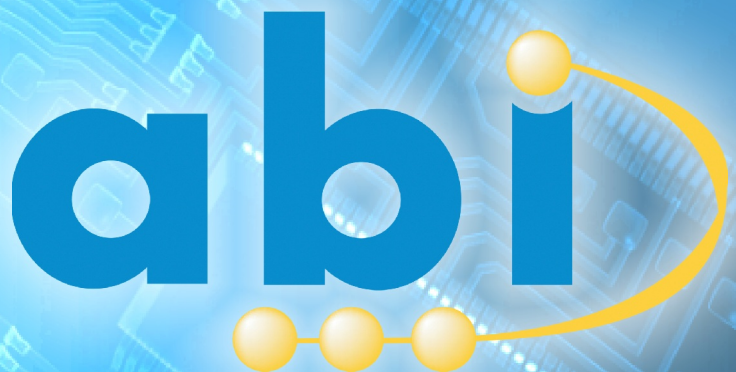
- Library development manager for IC configuration
- PLIP language for full generation of new IC functional tests
- Compiler, debugger and active help integrated
- Connection to PC via RS-232 or USB (with adapter)

CompactLink Software

A PC based software package that allows users to add new devices to the library and create functional tests to suit special applications.

New IC functional tests can be created using *PremierLink IC Programming (PLIP)*, a high-level descriptive test programming language optimised for generation of both analogue and digital IC test programmes.

Thanks to the RS-232 link, software updates (available on the internet) can be downloaded and programmed into the Compact units. This active link also allows for live testing of new devices.

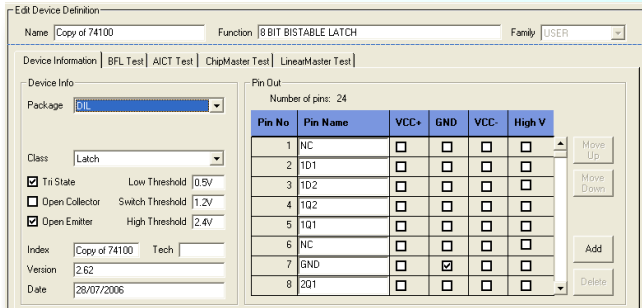


www.abielectronics.co.uk

CompactLink Software

Library Development Manager

The Library Development Manager displays all the devices added to the library and saved in the USER family. All details are stored in the Microsoft Access™ compatible database file located in the PremierLink folder. The device data is organised in 20 families and can be filtered using the drop down menus. A device name or function can also be typed in to facilitate the search. The list will be filtered to show only the entries containing the entered text. As an option, *intelligent sort* produces a more logical list by using the numeric part of the device name only.

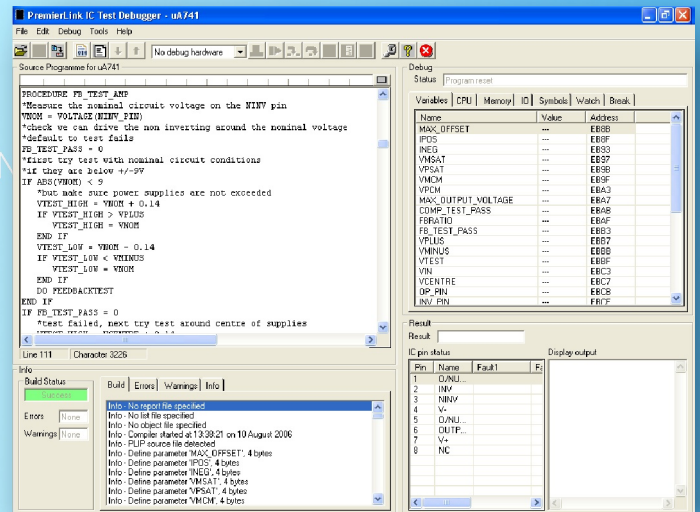


Device Definition

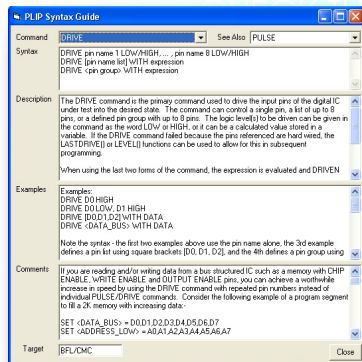
When a device is selected or created, the device definition window appears. This allows the user to enter the information related to the device as well as define its physical characteristics. The name and function will be used by the database for sorting. Parameters such as package, class, thresholds and output types may also be selected. The power and ground pins of the new device must be specified using the pin out table.

Programming Interface

The Programming Interface is designed for the generation and debugging of new functional IC tests. PLIP (PremierLink IC Programming) is a high level language designed specifically for test programming. The syntax is highly descriptive so that programmes are, to a large extent, self commenting. However, comments can also be inserted if required. The built in compiler generates binary data which can be executed in stand alone form by the integral debugger or combined into library files for use with System8 products. Up to 3 breakpoints can be added to the programme where execution can be suspended and data can be examined. The debugger allows the user to identify and fix the possible problems in the programme, whilst connected to the hardware, before adding the new device to the library.



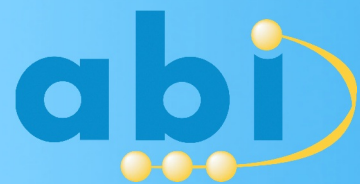
DRIVE [pin name] [LOW|HIGH, ...] [pin name] [LOW|HIGH] [pin name list] WITH expression [pin groups] WITH expression



Online Active Help

CompactLink is supplied with an extensive online active help which can be accessed at any time during programming. This facility provides the user with a PLIP syntax guide for each command. The Active Help window is broken down into :

- A syntax section
- An extensive description of the command
- Concrete examples for illustration
- Additional comments (if applicable)
- Target field



ABI Electronics Limited
Dodworth Business Park
Dodworth, Barnsley
South Yorkshire S75 3SP
United Kingdom
Tel: +44 1226 207420
Fax: +44 1226 207620
www.abielelectronics.co.uk

Functional IC Test Generator